

Designed with simplicity in mind, the BU2 range hood models are made to exacting standards and offer the most for the money.

SIZE	WHITE	WHITE WITH BLACK CONTROL	BLACK	STAINLESS	GREASE FILTER (replacement)	CHARCOAL FILTER
24 in.	-	BU224WH	BU224BL	BU224SS	BP29	41F
30 in.	BU230WW	BU230WH	BU230BL	BU230SS	BP29	41F

HVI PERFORMANCE						
Duct Orientation	Size	Damper	Sones		CFM	
			Normal	High	Normal	High 0.1 in. w.g.
Vertical - Rectangular	3¼ in. x 10 in.	Included	4.0	7.5	110	160
Horizontal - Rectangular	3¼ in. x 10 in.	Included	4.5	7.0	100	160
Vertical - Round	7 in.	Sold separately	3.5	6.5	140	190

FEATURES	
Control type	2-speed rocker switch
Delay off	no
Filter Clean Reminder	no
Heat Sentry™	no
Lighting	1-level 75-watt bulb (not included)
Grease Filter	Aluminum (Qty. 1)
ENERGY STAR®	no
Recirculation	Charcoal filter sold separately

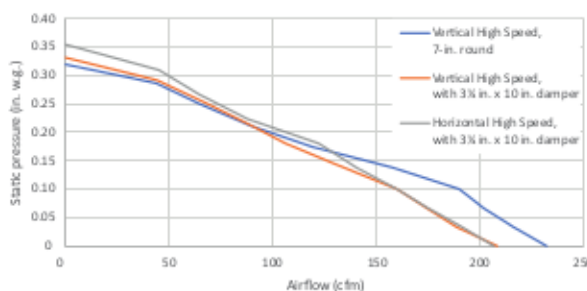
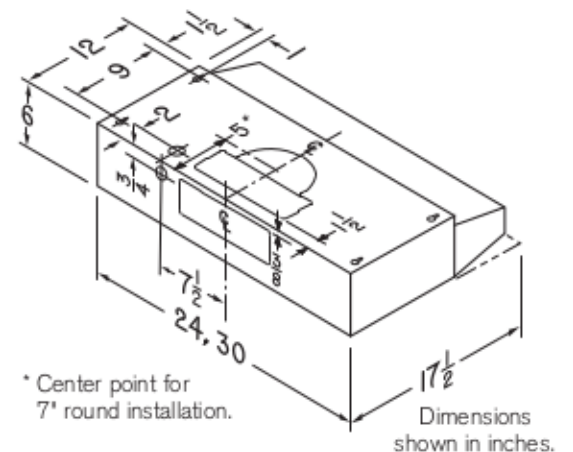
AC INPUT	
120 V, 60 Hz - 2.5 AMPS	

OPTIONAL ACCESSORIES	
¾ in. x 10 in. to 6-in. Round Duct Transition	411
7-in. Round Damper	BP87Q
7-in. Round Adapter Plate	SR680508

MOUNTING HEIGHT	
18 in. to 24 in. from cooktop to bottom of hood	

LIMITED WARRANTY	
1-year (See installation manual for full warranty text.)	

FOR INDOOR USE ONLY



HVI-2100 CERTIFIED RATINGS comply with new testing technologies and procedures prescribed by the Home Ventilating Institute, for off-the-shelf products, as they are available to consumers. Product performance is rated at 0.1 in. static pressure at high speed based on tests conducted in an HVI-approved state-of-the-art test laboratory. Sones are a measure of human-perceived loudness, based on laboratory measurements.

99045919G